



# SECURITY ON WHEELS SMART MOBILE TRANSPORTATION SOLUTION

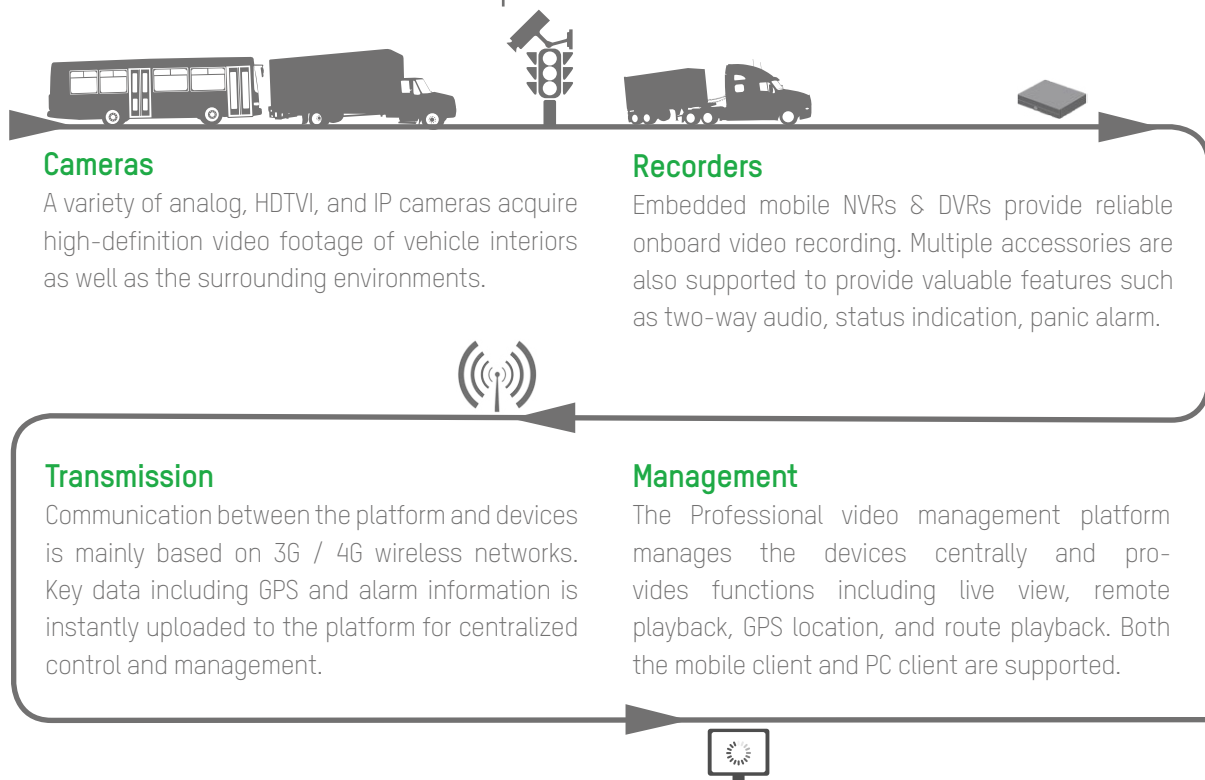
MOBILE





Safe public transportation is a worldwide concern, especially responding quickly to traffic accidents and guarding against potential terrorist attacks on transportation facilities. In addition, increased passenger loads and more complex transportation hubs call for a central management system to safeguard against unlawful activities such as pickpocketing, disorderly behavior, and so on.

## Smart Mobile Transportation Solution





## ■ Mobile HD Video Monitoring

Comprehensive high-definition video monitoring helps authorities to deal with situations such as pickpocketing, traffic accidents, terrorism, disorderly behavior of passengers and drivers, and more. Pictures and videos can be exported to law enforcement for investigation.



Supervising driver's behavior



Monitoring entrance with intrusion detection



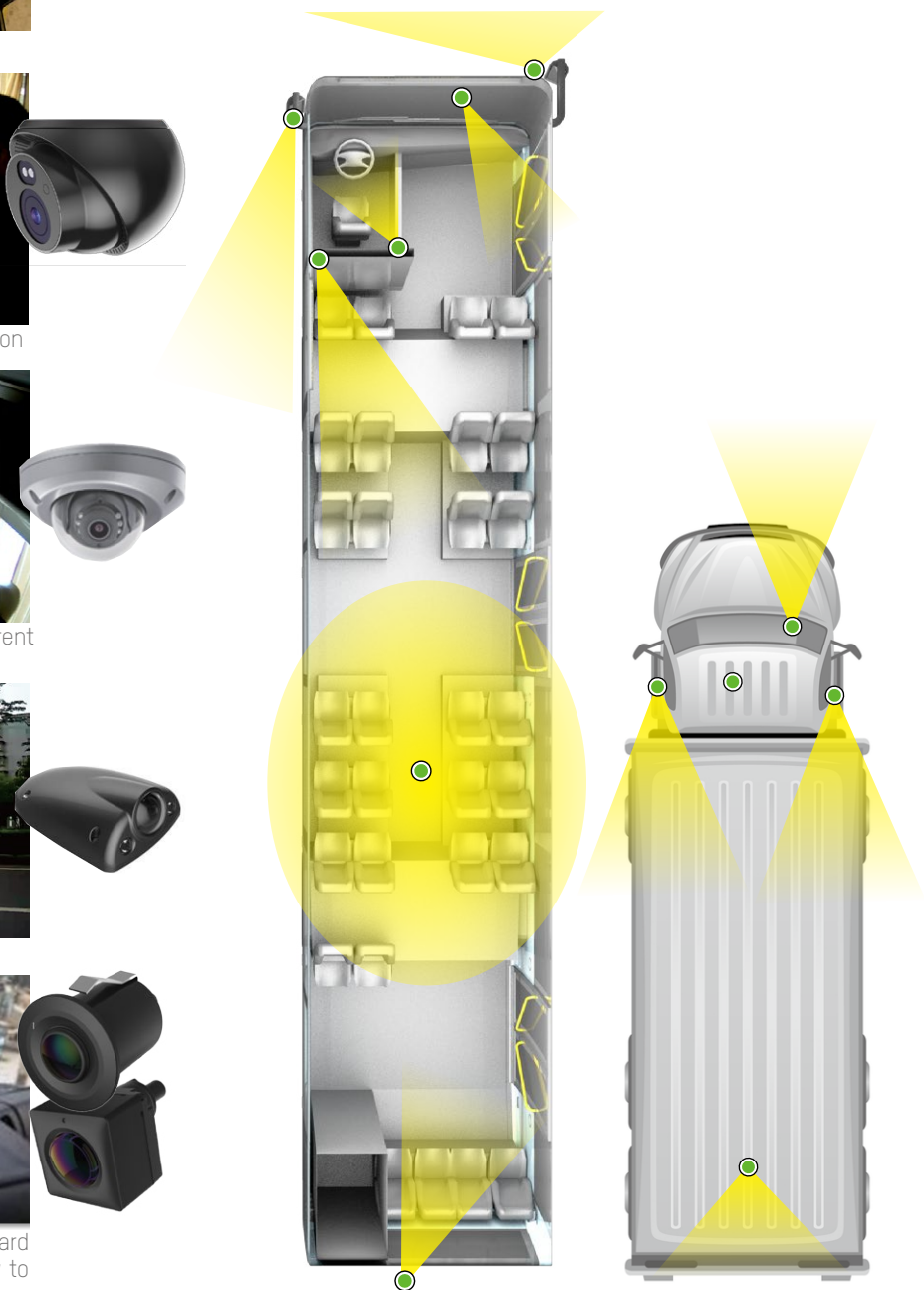
Viewing vehicle passengers from different angles



Monitoring traffic outside of the vehicle



Dedicated fisheye camera and on-board recorder with LCD monitor offer side view to prevent dead-angle on backing a vehicle.

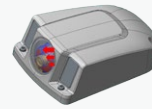


Rich Mobile-Dedicated Products to Satisfy Every Transport Requirement



Up to 1920x1080 resolution with mobile IP products

NETWORK



Special heating module and defog for outer-vehicle cameras



- High-reliability storage with die-cast aluminum design
- Fully enclosed with dual-protected HDD and patented aviation airbag
- Reinforced camera materials parts with silicone pad for shock absorption
- Support multiple specialized connectors for vehicles or trail transport.

\* Customization may required.

HDTVI



Dual-card design and zero channel combine to optimize wireless transmission

ANALOG

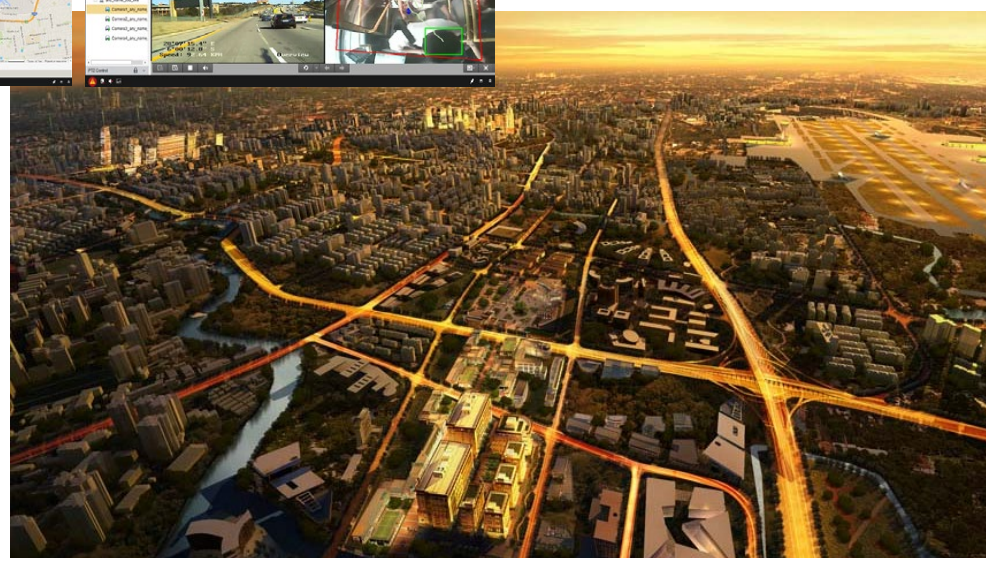
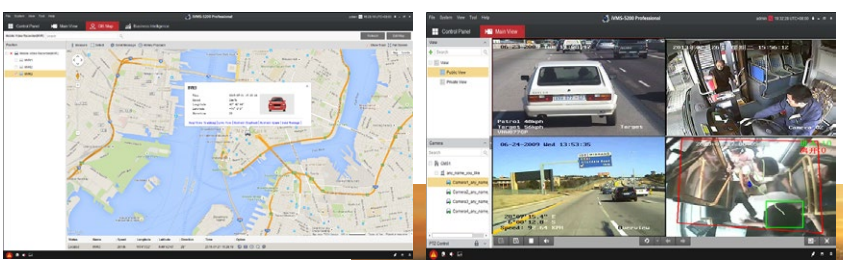


- Wide range isolated power supply to adapt sudden power voltage change;
- Support low battery voltage detection;
- Using super capacitor to ensure normal shutdown;
- Overvoltage protection against shocks (pulse filtering)



## Real-time Tracking

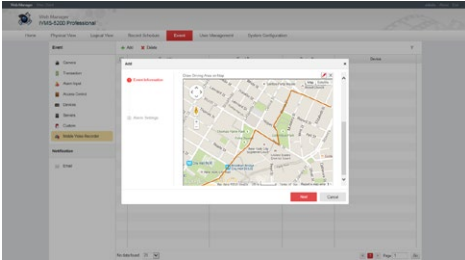
Tracking in real time helps authorities inspect onboard situations.





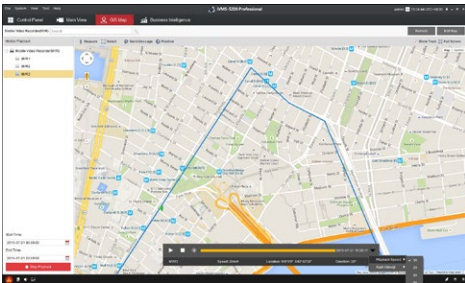
## Exception Alarms

Smart features such as fence crossing alarms and deviation alarms can help authorities take effective action to handle security events.



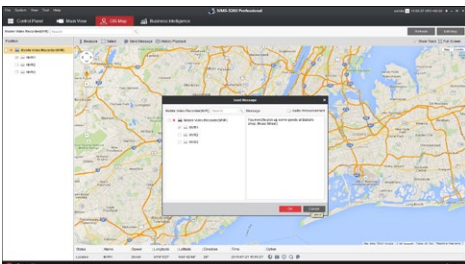
## Routine Playback

This tool enables authorities to evaluate each vehicle's efficiency.



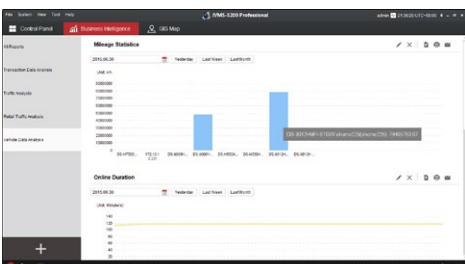
## Instant Messaging

This function allows the security center to communicate directly with the vehicle.



## Analytic Reporting

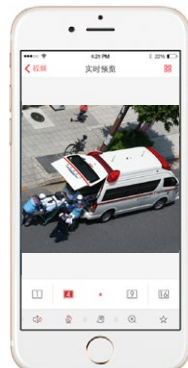
Reports on vehicle mileage, traffic, and timing provide intelligence that helps authorities make smart decisions to enhance revenue.



■ Remote Monitoring and Video Push Alerts from Anywhere



Traffic Accident



Video Push

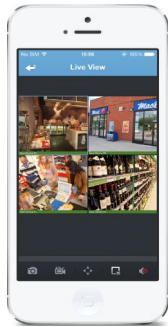


Central Platform

A connection between the mobile client and the central platform allows real-time video from cellphone cameras to be sent to the central platform and then transmitted to more clients.

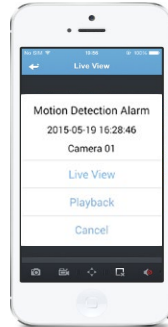


## ■ An Easy and Effective Mobile Client



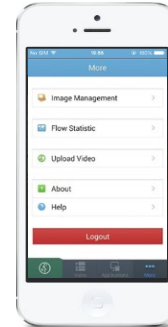
### Live View/Playback

- View real-time video from the cameras
- PTZ control
- Turn on / off the audio in live view
- Manual recording
- Search by date / storage mode



### Alarm Notification

- Receive and display alarm notifications
- View the alarm-related live video or recording



### Video Push

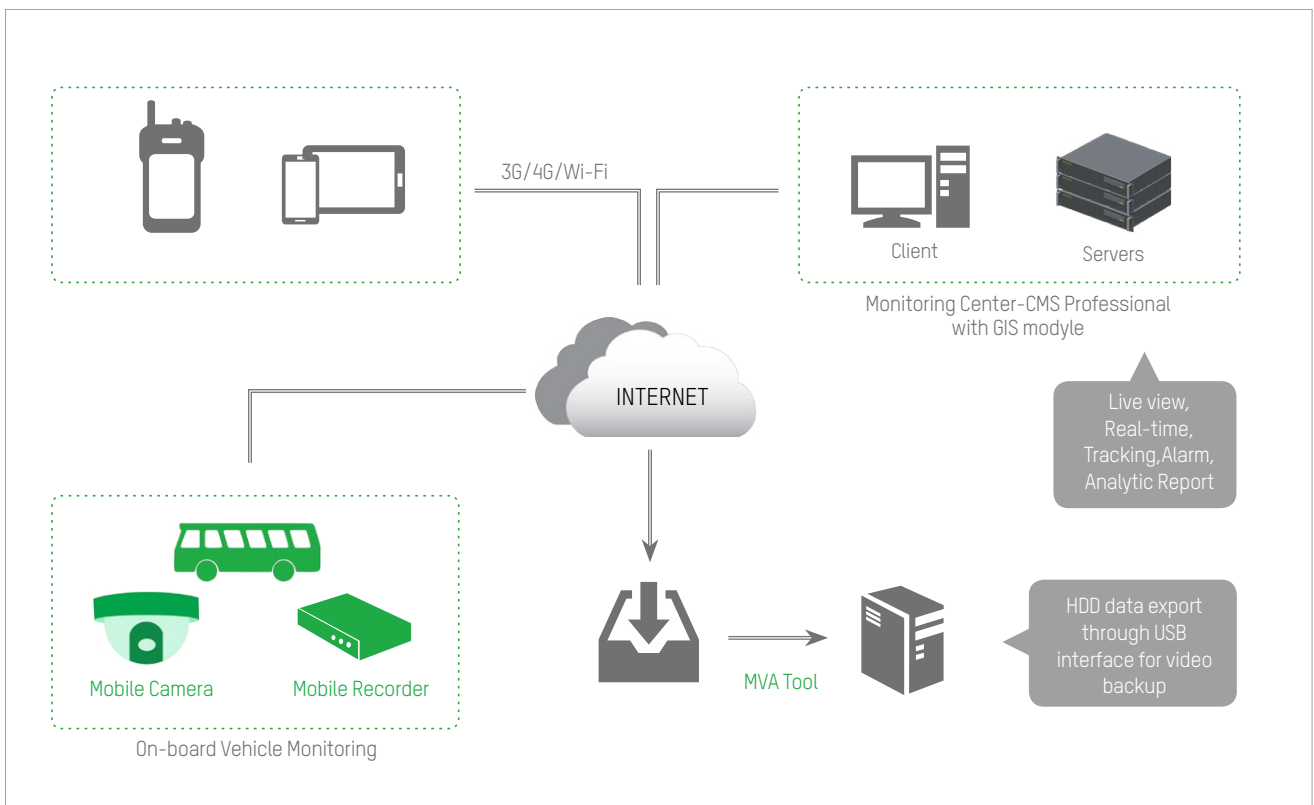
- Video push from your smart phone to control client
- Instant video sharing with other users



### iOS/Android Support

- iOS 6 / iPhone 4S, iPad 2, or later
- Android 2.3.3 / CPU@1GHz, Memory@1GB, or above

## ■ System Architecture Diagram







## A HANDHELD SURVEILLANCE SYSTEM TO HANDLE TOUGH JOBS

Developed specifically for mobile handheld surveillance applications, new Portable Video Recorder (PVR) offers superior video performance and is exceptionally versatile and robust, making it suitable for practically any surveillance job and any environment. The PVR offers ideal support in situations requiring constant communication and control to ensure users' safety even under the most dangerous conditions — cutting-edge technology in a portable package that handles both daily surveillance needs and emergency situations.



Portable Video Recorder



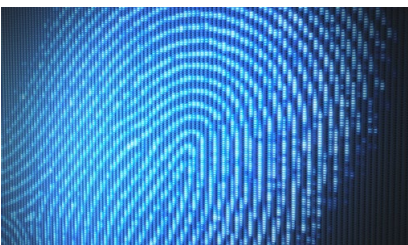
Multifunctional, waterproof, dust-proof, and drop-proof



GPS, 3G, Wi-Fi



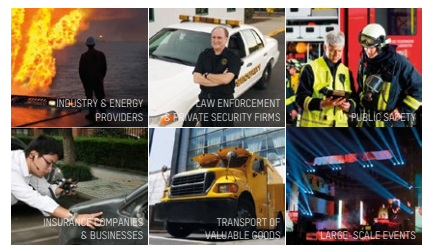
High-resolution camera and extensive range of accessories



Digital fingerprint identification and protected access



Centralized management via the platform



A wide variety of applications



■ Dubai-Sharjah-Ajman’s National Charity School Project, UAE

100 school buses for the Dubai-Sharjah-Ajman’s National Charity School are equipped with CCTV cameras, DVRs, driver LCD screens. This convenient solution ensures the protection of all pupils and works perfectly in harsh and challenging environments that may include vibration, dust, changing temperatures – and children, as noted by customers!



■ Bangkok’s Police Force Project, Thailand

mobile security solution helps Bangkok’s police force stay ahead of the curve. Portable Video Recorder and Mobile DVR have been placed in squad cars and motorcycle units to achieve a wide array of security benefits for the Thai police force and the larger communities in which they serve.



■ Ningbo City Bus Mobile Surveillance Project, China

This installation includes more than 3,600 buses belonging to 14 transportation companies in Ningbo. The mobile surveillance solution helps customers solve security problems on their cars, protect their assets, and safeguard passengers and drivers. It can also provide video evidence to security officials for investigation purposes.



■ Frankfurt's Light-Rail Stations, Germany

megapixel mini dome cameras were installed within support columns as well as next to the emergency button. This action immediately triggers the camera and sends the image in real-time to the control center, thereby alerting security personnel about the situation.



■ Supervia Stations Surveillance System, Brazil

megapixel dome cameras were installed on train corridor ceilings to provide a clear and vivid view of the thousands of passengers who use this station. The compact design of this camera results in a less visible presence, thereby reducing the possibility of vandalism – either accidental or intentional.